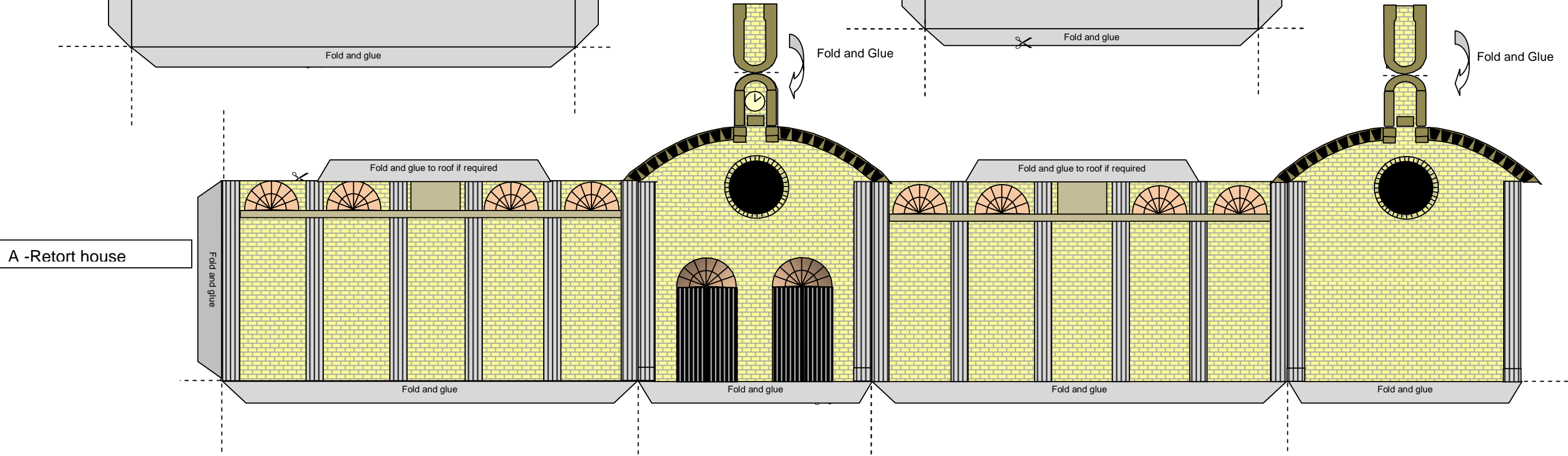
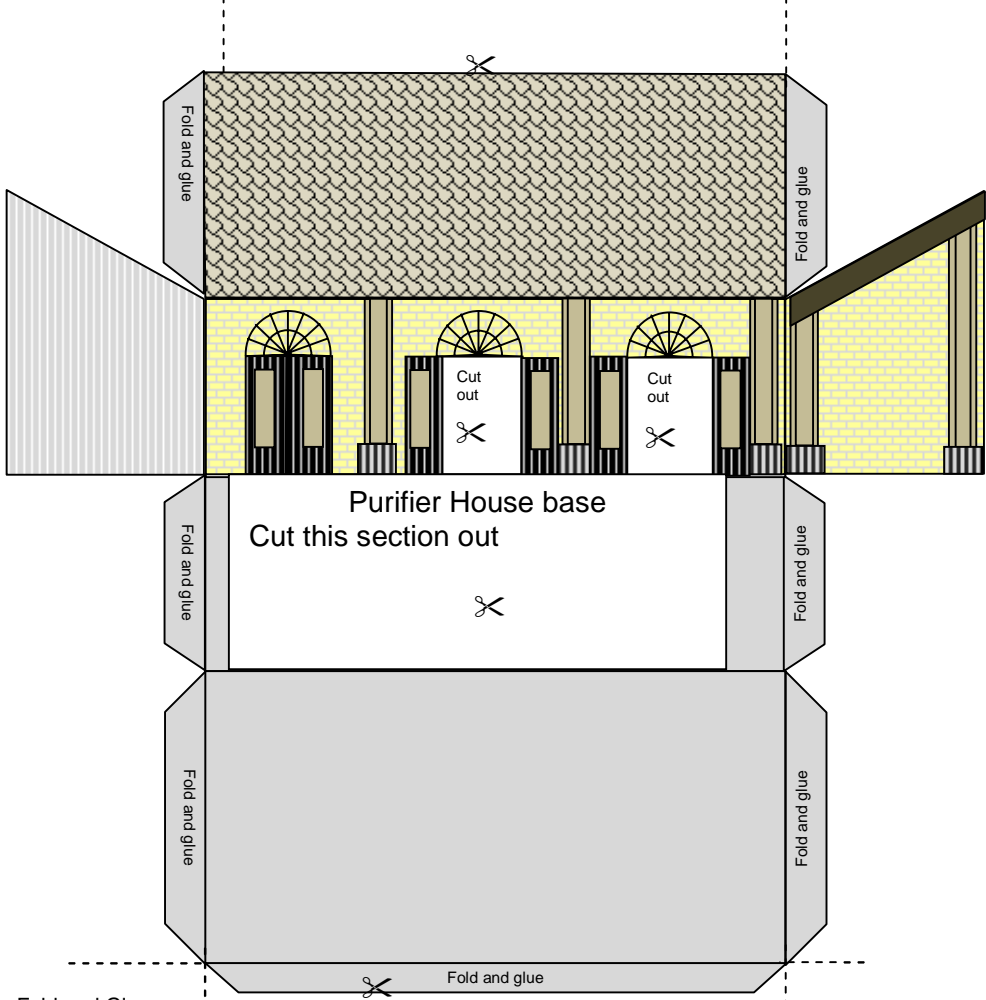
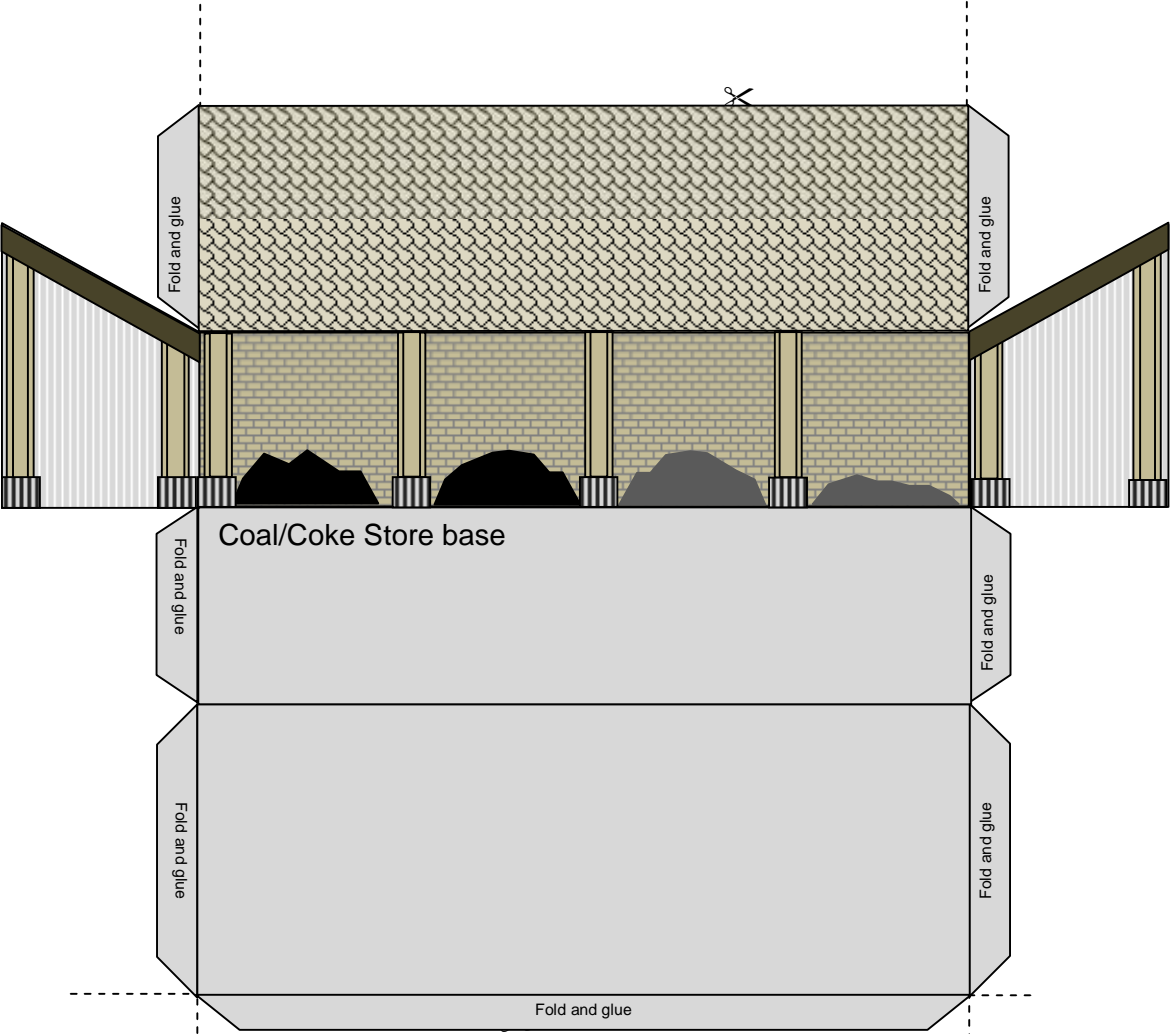
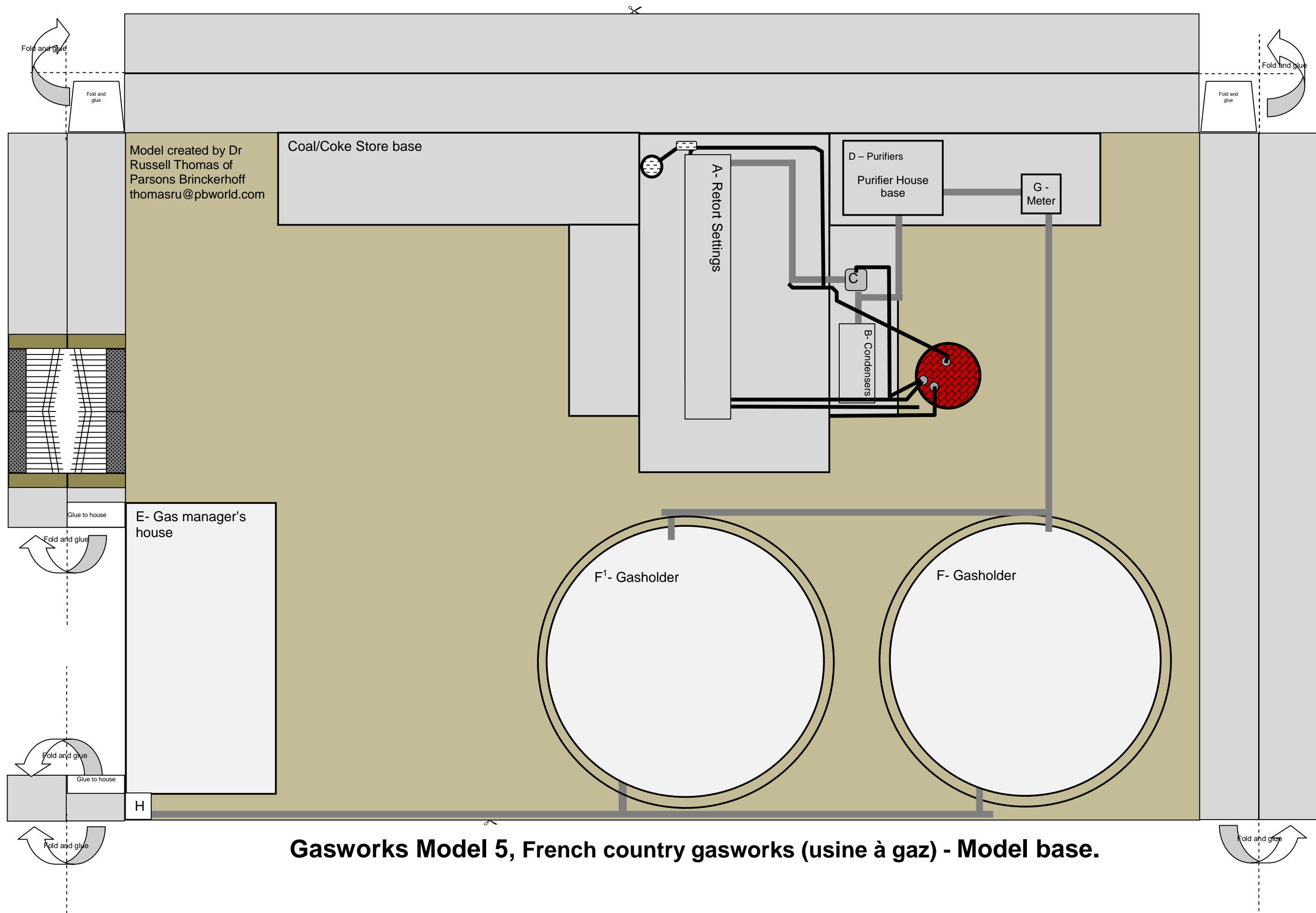


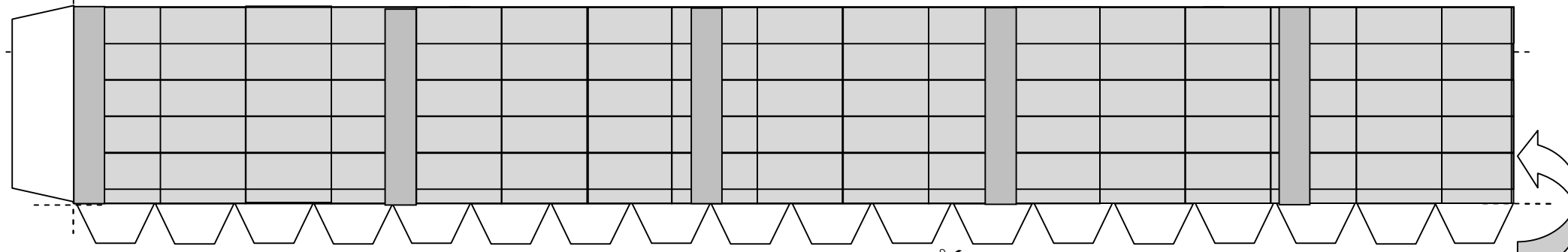
Gasworks Model 5 – French country gasworks (usine à gaz) – Buildings page 1





Gasworks Model 5, French country gasworks (usine à gaz) - Model base.

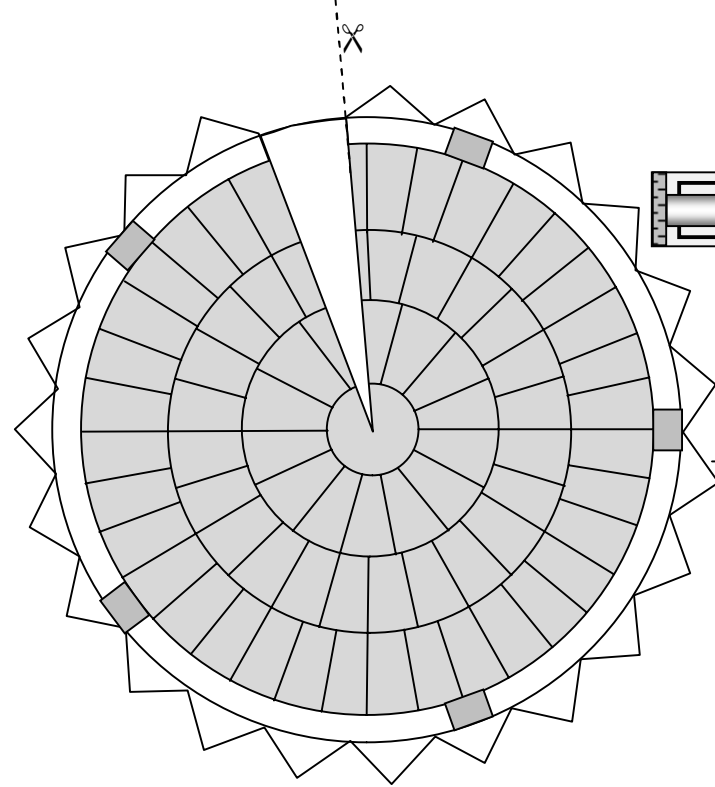
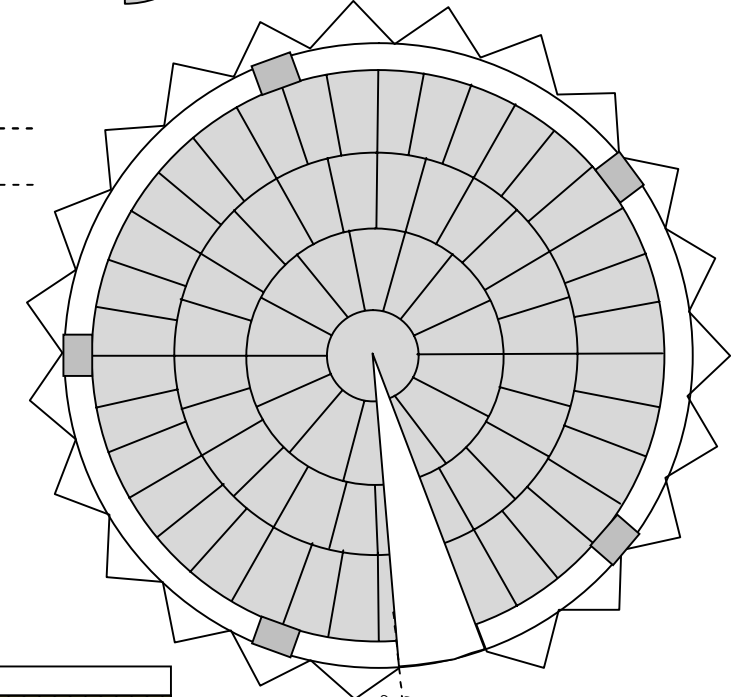
F² - Gas holder walls (top)



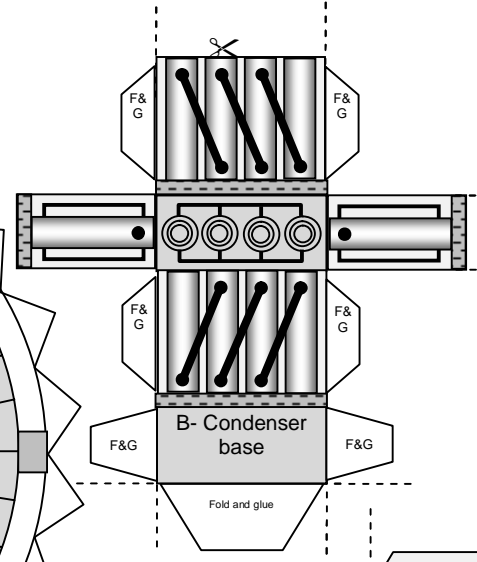
Gasworks Model 5, French country gasworks (usine à gaz) - Buildings page 2

Fold and glue

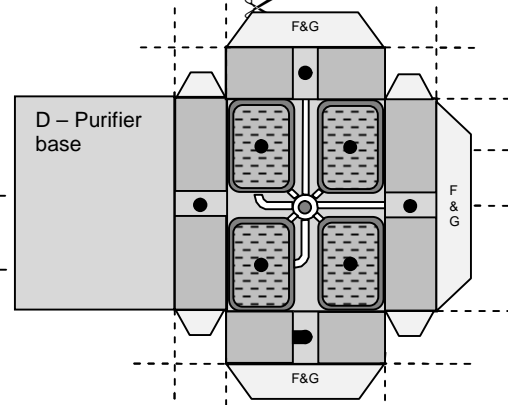
F¹ - Gas holder roof



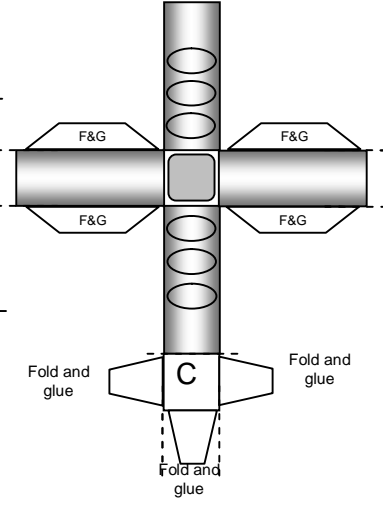
F² - Gas holder roof



Fold and glue



D - Purifier base

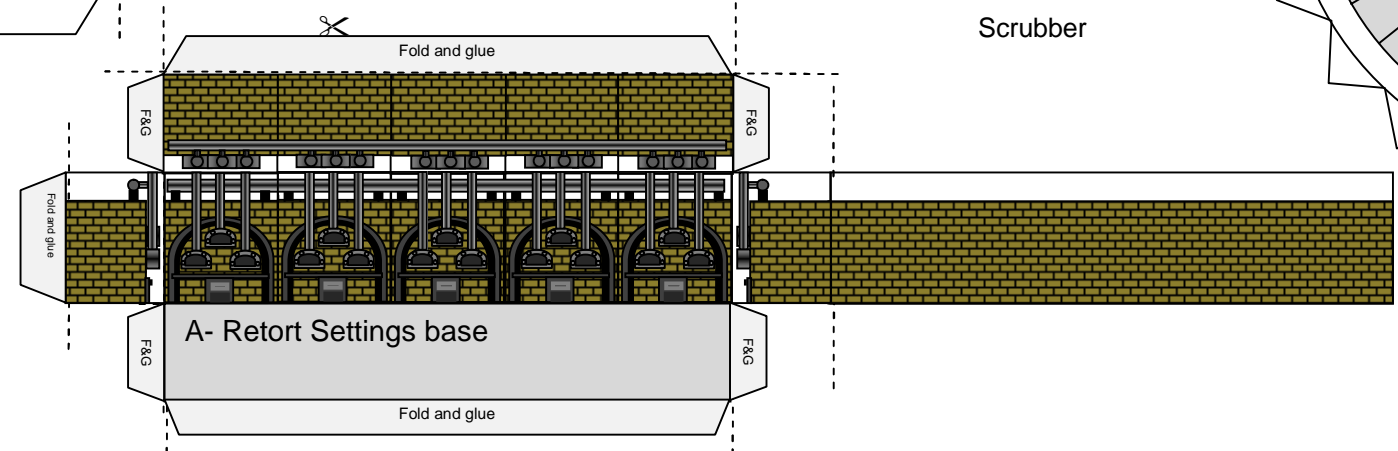


Fold and glue

Scrubber

Fold and glue

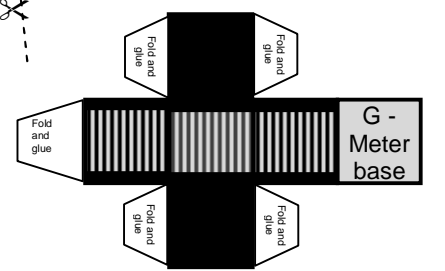
Fold and glue



A- Retort Settings base

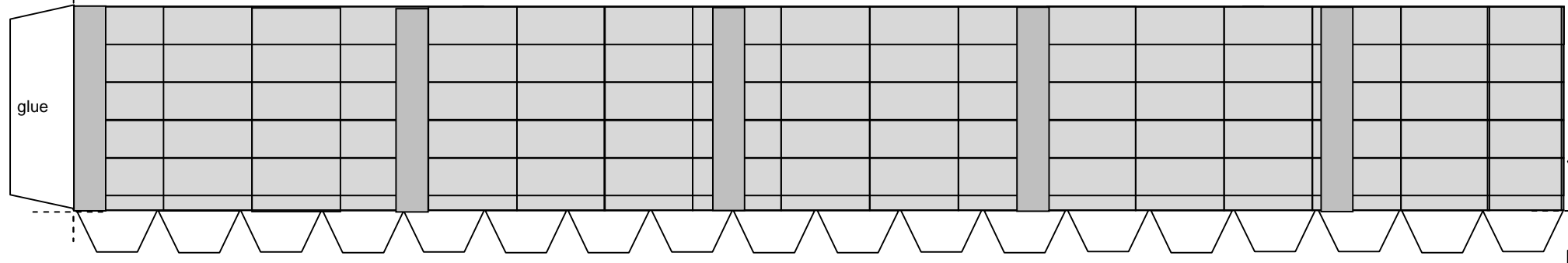
Fold and glue

Fold and glue



G - Meter base

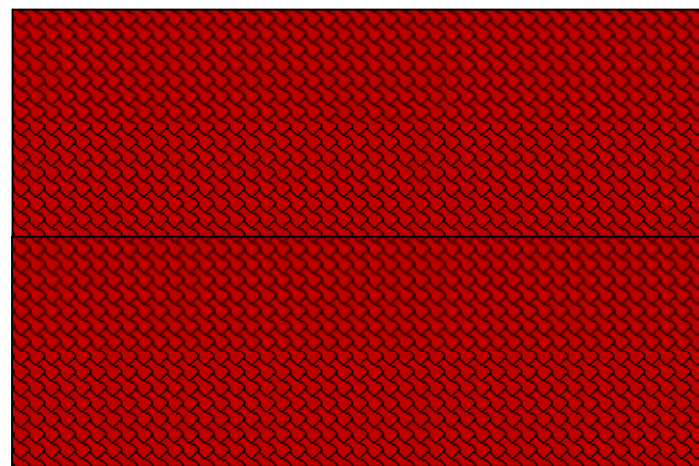
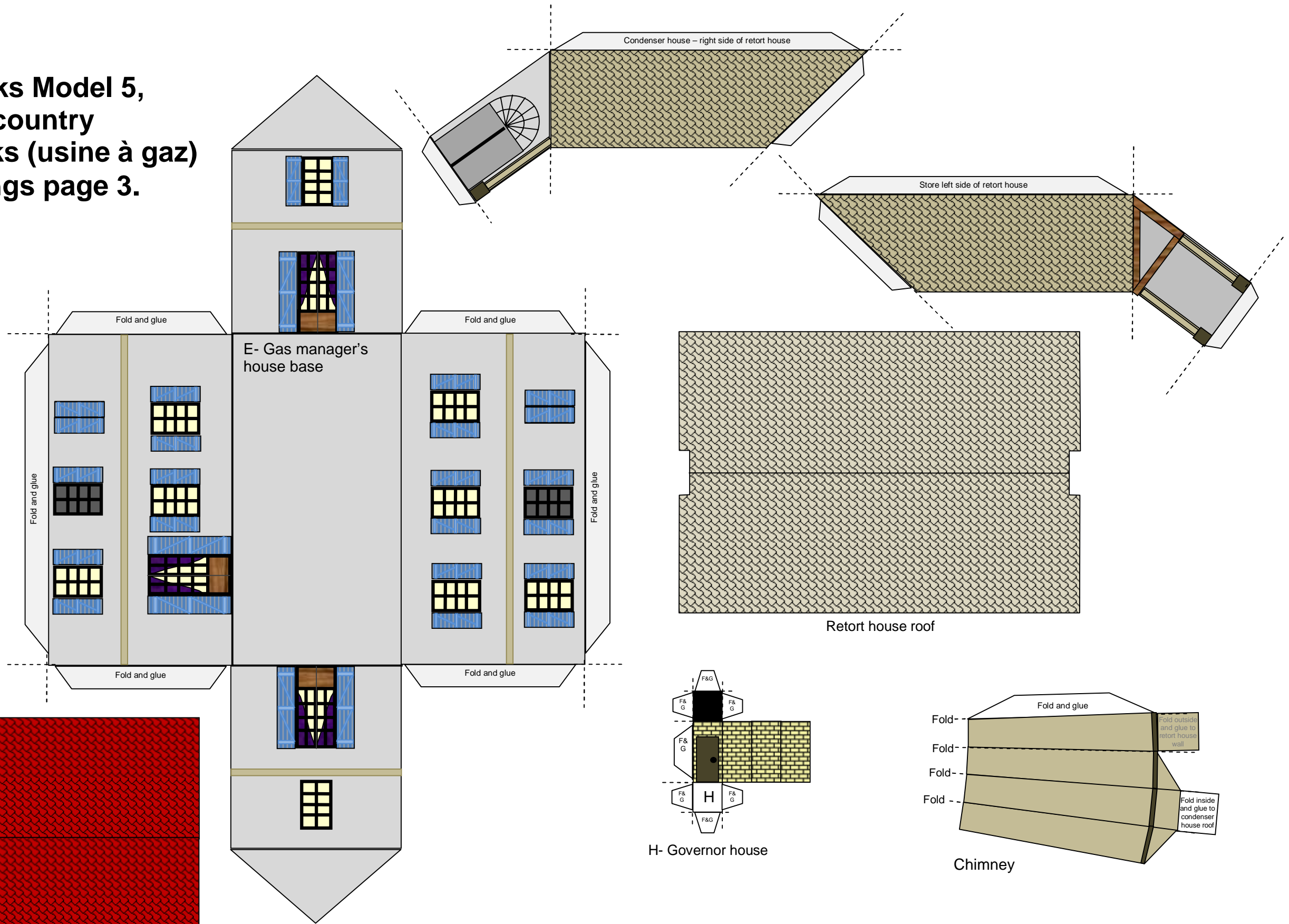
F² - Gas holder walls (top)



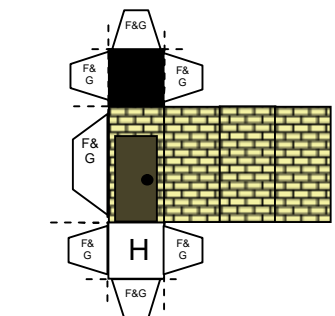
glue

Fold and glue

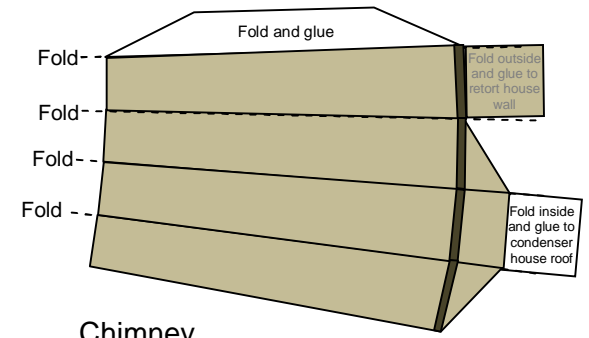
**Gasworks Model 5,
French country
gasworks (usine à gaz)
- Buildings page 3.**



Gas manager house roof



H- Governor house



Chimney

Gasworks Model 5. French country gasworks (usine à gaz) - Instructions and original plans

Information (This model was created by Dr Russell Thomas of Parsons Brinckerhoff (thomasru@pbworld.com))

The model is a recreation of a French Country Gasworks based on the plans shown on this page. Such a gasworks would have been located in a small town (unfortunately I do not know where). Whilst not a perfect recreation, it provides an example of the similarities and differences in the design of a French gasworks as opposed to those being built in Great Britain.

France had a long and important role in the development of the gas industry. The work of the Frenchman Lebon on the manufacture of gas from wood was very important. It was observed by Frederick Albert Winsor (originally Friedrich Albrecht Winzer), who was then inspired to come to London to attempt promote the manufacture and use of gas. Winsor's persistence in establishing a gas company eventually led to the creation of the Gas Light and Coke Company.

For more information on the gas industry in France a visit the website of Conservation Du Patrimoine Gazier (COPAGAZ) at <http://www.copagaz.asso.fr/>. COPAGAZ is not connected to the creator of this model.

Instructions

1. Print out all sections on firm A3 card for best results!
2. Cut out gasworks base, fold all points as marked by dashed lines.
3. Fold tabs at the back of the base, glue inside side walls to enable the sides and back to stand vertical.
4. Cut out walls of gasholder vessel F¹ walls and attach together via gluing the tab on left hand side of the tank.
5. Cut out gasholder roof, cut across the radius of the roof as marked, assemble with glue so the roof is pointed. Fold pointed tabs on the roof of the gasholder inward apply glue to top tabs and attach to gasholder vessel wall. Ensure marking on the roof and walls line up.
6. Fold tabs on the base of the gasholder vessel wall inward and apply glue so it can be attached to the gasworks base.
7. Repeat for Gasholder F²
8. Cut out Retort Setting, fold along tabs as marked by dashed lines, apply glue to tabs and assemble as cuboid. Glue to base.
9. Cut out Purifier, fold along tabs and assemble as a cuboid. Glue and attach to gasworks base.
10. Cut out Condenser, fold along tabs and assemble as a cuboid. Glue and attach to gasworks base.
11. Cut out Scrubber, fold along tabs and assemble as a cuboid. Glue and attach to gasworks base.
12. Cut out Meter, fold along tabs and assemble as a cuboid. Glue and attach to gasworks base
13. Cut out Retort House and fold tabs, glue together via end tabs, attach to base.
14. Cut out Retort house roof, carefully bend so that it fits on the curved roof, supported between the two small towers. Optionally you can glue on the roof via the tabs provided.
15. Repeat for gas managers house.
16. Cut out fold and attach pitched roofs on gas managers house, attach to base.
17. Cut out Governor house, fold, glue and assemble as a cuboid, attach to base.
18. Cut out Coal/coke store, fold, glue and assemble with slanting roof, attach to base.
19. Cut out Purifier house, fold, glue and assemble with slanting roof, attach to base.
20. Cut out condenser house, fold along dashed lines and glue to base, retort house wall and the roof of the purifier house.
21. Cut out store house, fold along dashed lines and glue to base, retort house wall and the roof of the coal and coke store.
22. Cut out Chimney, fold edges as marked and glue side tab to form chimney, glue to condenser house roof and retort house wall via marked tabs.

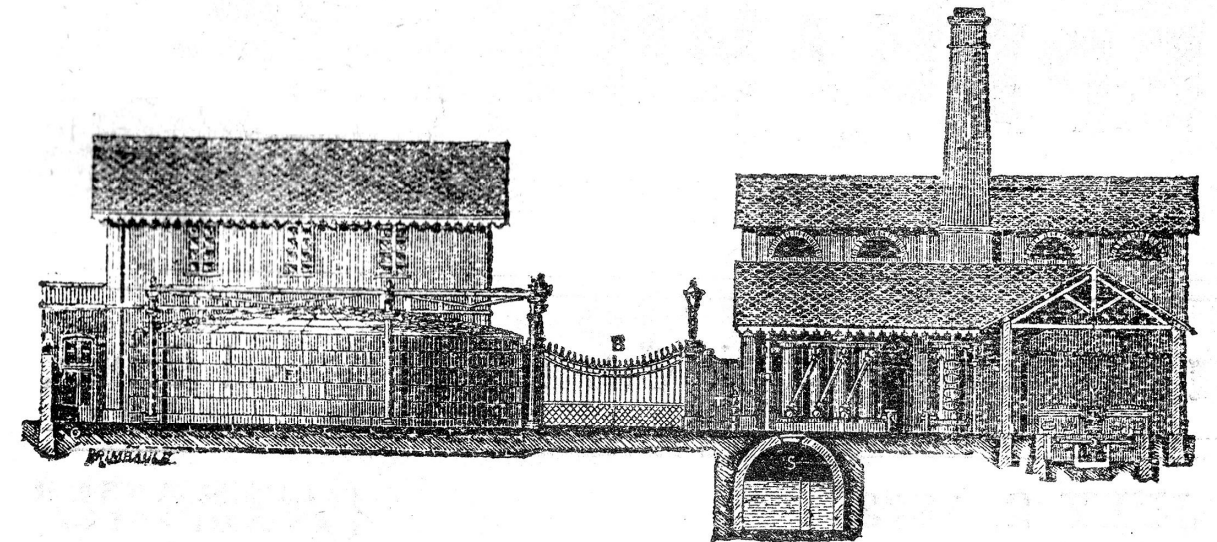


FIG. 3.—SIDE VIEW OF GAS WORKS REPRESENTED IN FIGS. 1 AND 2, LOOKING FROM RIGHT TO LEFT.

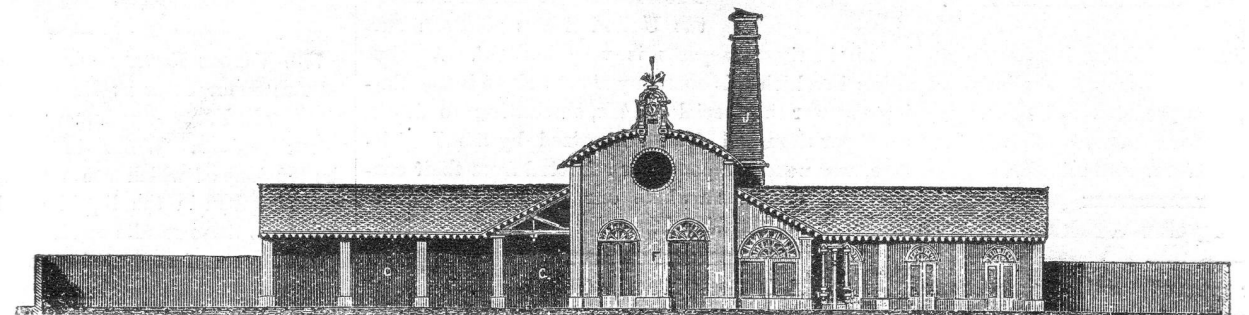


FIG. 1. VIEW OF THE RETORT AND PURIFYING HOUSES OF GAS WORKS FOR SMALL WORKS.

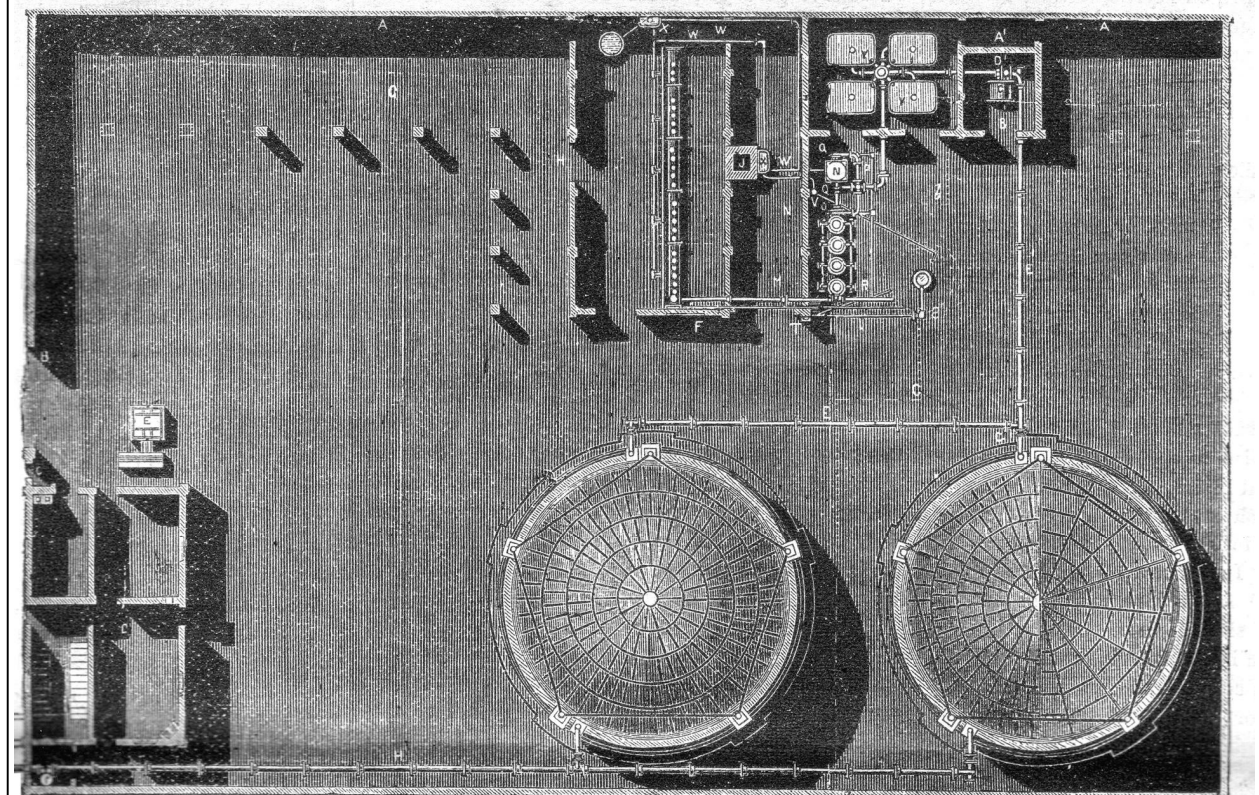


FIG. 2. PLAN VIEW OF THE RETORT AND PURIFYING HOUSES OF GAS WORKS FOR SMALL WORKS.